

# Assembly Instruction Sheet #S-8318W12C For Style 8318W12C

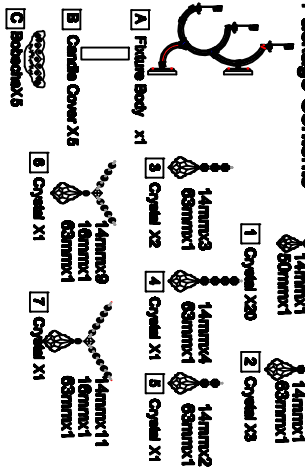
Tools Required: Flathead screwdriver, Philips screwdriver, pliers, wire cutters, wire strippers, electrical tape, safety glasses.

Light Source: (9) E12 base bulb only Maximum (Not Include).  
Individual Assembly Time: 18-30 minutes.  
Preparation: Identify and inspect all parts before beginning installation. Check package content list and diagrams below to be sure all parts are present. If any parts are missing or damaged, do not attempt to assemble, install, or operate the fixture. Contact customer service for replacement parts.

### ⚠ Warnings and Cautions

Turn off electricity at circuit breaker or main fuse box before installation. Consult a licensed electrician if in doubt. These instructions are provided for your safety. It is very important you read them completely before installing the fixture. We strongly recommend that a licensed, professional electrician perform the installation. Disconnect fixture from power source before replacing bulbs. Make sure bulbs are given sufficient time to cool before removal.

### Package Contents



### Hardware Contents

PART	DESCRIPTION	QUANTITY
A1	Cap Nut	2pcs
M1	Washer	2pcs
CD	Crab Nut (AA)	2pcs
DD	Crab Nut (AA)	2pcs
EE	Mounting Screws	2pcs
EE	Mounting Screws	2pcs

### STEP 1 - Attach Mounting Screws, Lock Washers and Hex Nuts to Mounting Bracket.

A. Line up a set of holes on the Mounting bracket(EE) and Holes on the Backplate. Thread Mounting Screws (DD) into the holes on the Mounting bracket (EE). Pass Lock Washers and Thread Hex Nuts onto the Mounting Screws (DD). Hand tighten unit snug.

Figure 1

### STEP 2 - Attach Mounting Bracket to Outlet Box

A. Pass the supply wires through the Mounting bracket (EE). Attach the Mounting bracket (EE) to the Outlet Box with the Head of the Green Ground Screw facing you. Secure it with Outlet Box Screws. Tighten unit snug.

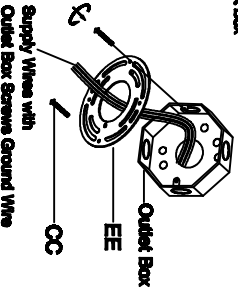


Figure 2

### STEP 3 - Fit Backplate to Mounting Bracket Assembly

A. Fit the backplate to Mounting Screws (DD) and secure with Cap nut(AA). Note: The backplate enclosure snug against the ceiling and the Cap nut (AA) fit snug, adjust the length of the Mounting Screws (DD) by uncranking the Hex Nut and Lock Washer and then screwing Mounting bracket (EE) in or out of the Mounting Screws (DD) until the correct length is achieved. Once the backplate is secure, remove the Cap nut (AA) and backplate and proceed to Step 4.

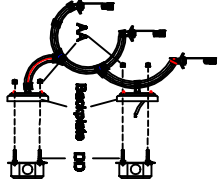


Figure 3

### STEP 4 - Wire Connections

A. Use standard wire connectors to make all wire connections. Twist connectors until wires are tightly joined together. Wrap each connection with approved electrical tape and carefully stuff all the connected wires into the Outlet Box.

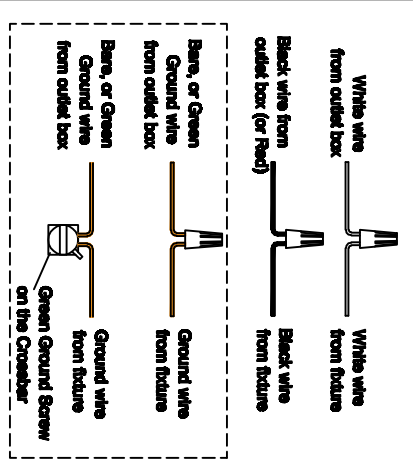


Figure 4

### STEP 5 - Install Backplate to Ceiling

A. Carefully tuck all wires into the outlet box and position the backplate in the backplate with the Mounting Screws (DD). Secure with Cap nut (AA) and hand tighten unit snug.

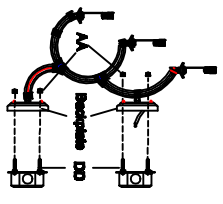


Figure 5

### STEP 6 - Install Bulb,Socket sleeve,Bobciche

A. Place bobciches and candle covers over sockets as shown. A. Install bulbs into sockets and screw snug into place.

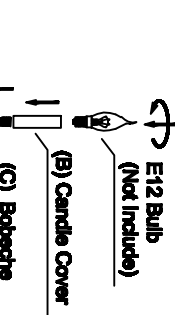


Figure 6

### STEP 7 - Install Crystals.

A. Attach Crystals to the Fixture Body (A).

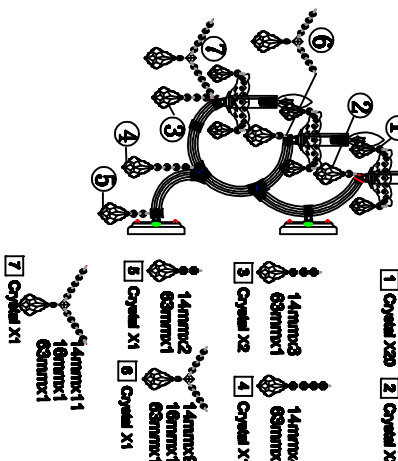


Figure 7